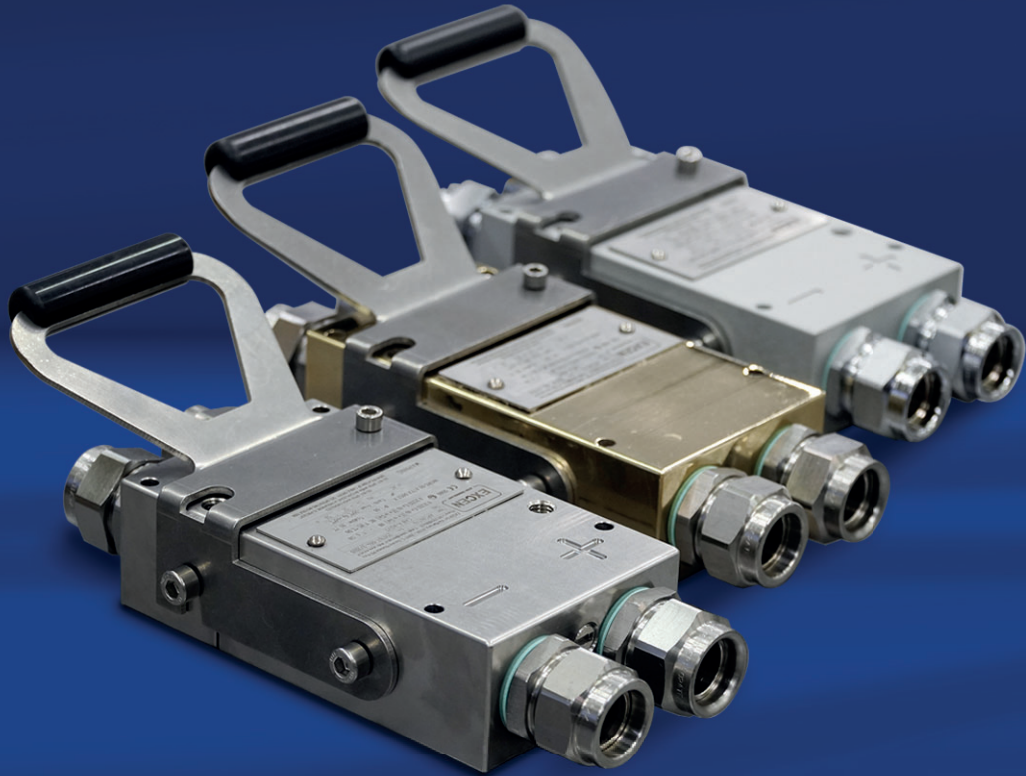




Battery Connector ATEX & IECEx



The CNB series Explosion-Proof connector is **designed for connecting DC circuits** and for **powering batteries in industrial vehicles, forklift trucks and machines** built to operate in areas with a potentially explosive atmosphere due to the presence of flammable gases and vapours and/or combustible dust.

- Designed for both **Group I** and **Group II**, they are suitable for **surface industry** Group II with areas classified as Zone 1 and Zone 21, and Group I M2, suitable for **applications in mines, tunnels and underground**
- Connectors can be made of **brass**, anodised **aluminium** alloy, or **stainless steel**
- **Built to last, compact, versatile** and adaptable for various applications
- With pull-out handle to **disconnect both poles in one single operation**
- Electrically safe: designed to **prevent reverse polarity and accidental opening** in a hazardous area
- **IP66** protection rating allows installation in the presence of dust and water jets.
- **Disconnection in hazardous areas (as option)**; safeguarding against internal sparks

■ Optionals on Request

3rd auxiliary pole - max10A (CNB-A)

Disconnection in hazardous areas function (in combination with battery charger for hazardous area)

Dual certification: **ATEX** and **IECEx**

■ Marking

Type Examination EU: FIDI 22 ATEX 0038X

IECEx Certificate of conformity: IECEx 17.0006X

CE 0080

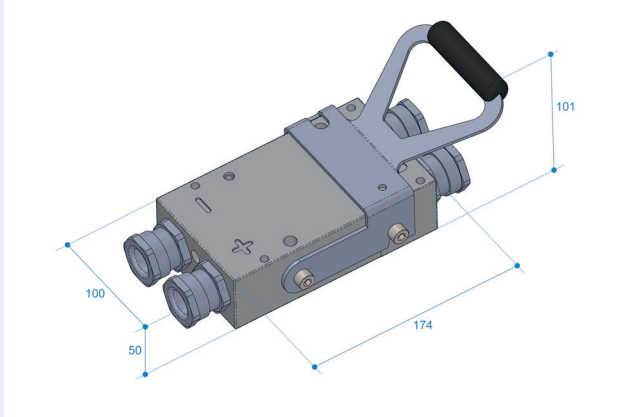
I M2 Ex db I Mb

II 2G Ex db IIC T6...T3 Gb

II 2D Ex tb IIIC T75°C ...T150°C Db IP66

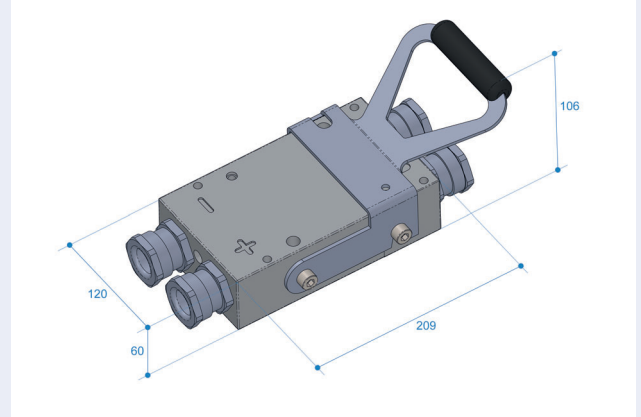
Tamb: -60°C ≤ Tamb ≤ +60°C

■ **Models CNB-1 (200A) and CNB-2 (320A)**



T. Amb	T. class	Max T. surface °C	Max T. cable °C	Max current (A)	Current Density A/mm ²
40° C	T4	125	124	350	7
	T5	90	90	350	5
	T5	90	90	275	4
	T6	75	75	250	5
	T6	75	75	200	4
45° C	T4	130	129	350	7
	T4	95	95	350	5
	T5	95	95	275	4
	T6	80	80	250	5
50° C	T4	100	100	350	5
	T4	100	100	275	4
	T5	85	84	250	5
	T5	85	84	200	4
55° C	T4	105	105	350	5
	T4	105	105	275	4
	T5	90	89	250	5
	T5	90	89	200	4
60° C	T4	110	110	350	5
	T4	110	110	275	4
	T5	95	94	250	5
	T5	95	94	200	4

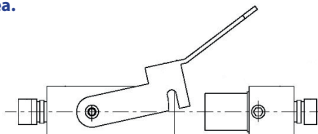
■ **Model CNB-3 (400A)**



T. Amb	T. class	Max T. surface °C	Max T. cable °C	Max current (A) 1 conn	Current Density A/mm ² 1 conn	Max current (A) 2 conn	Current Density A/mm ² 2 conn
40° C	T4	115	120	425	4,5	919	4,8
	T4	130	135	476	5	1075	5,7
	T5	95	100	358	3,8	710	3,7
	T6	80	85	307	3,2	554	2,9
	T3	135	140	476	5	1075	5,7
45° C	T4	115	120	408	4,3	867	4,6
	T5	95	100	307	3,2	554	2,9
	T6	80	85	290	3	502	2,6
50° C	T3	140	145	476	5	1075	5,7
	T4	130	135	442	4,7	971	5,1
	T5	95	100	324	3,4	606	3,2
55° C	T6	80	85	273	2,9	449	2,4
	T3	145	150	476	5	1075	5,7
	T4	130	135	425	4,5	919	4,8
60° C	T5	95	100	307	3,2	554	2,9
	T6	80	85	256	2,7	397	2,1
	T3	150	155	476	5	1075	5,7
60° C	T4	110	120	358	3,8	710	3,7
	T4	130	135	408	4,3	867	4,6
	T5	95	100	290	2,9	502	2,6
	T5	80	85	240	2,5	345	1,8

■ **Electrically Safe**

Disconnecting both poles; prevent reverse polarity and accidental opening in hazardous area.



■ **Semi-connector for battery charger**

